

**VPS** ARCHITECTURE

528 Main Street - Suite 400 Evansville Indiana 47708  
 P (812) 423-7729 F (812) 425-4561  
[www.VPSARCH.com](http://www.VPSARCH.com)

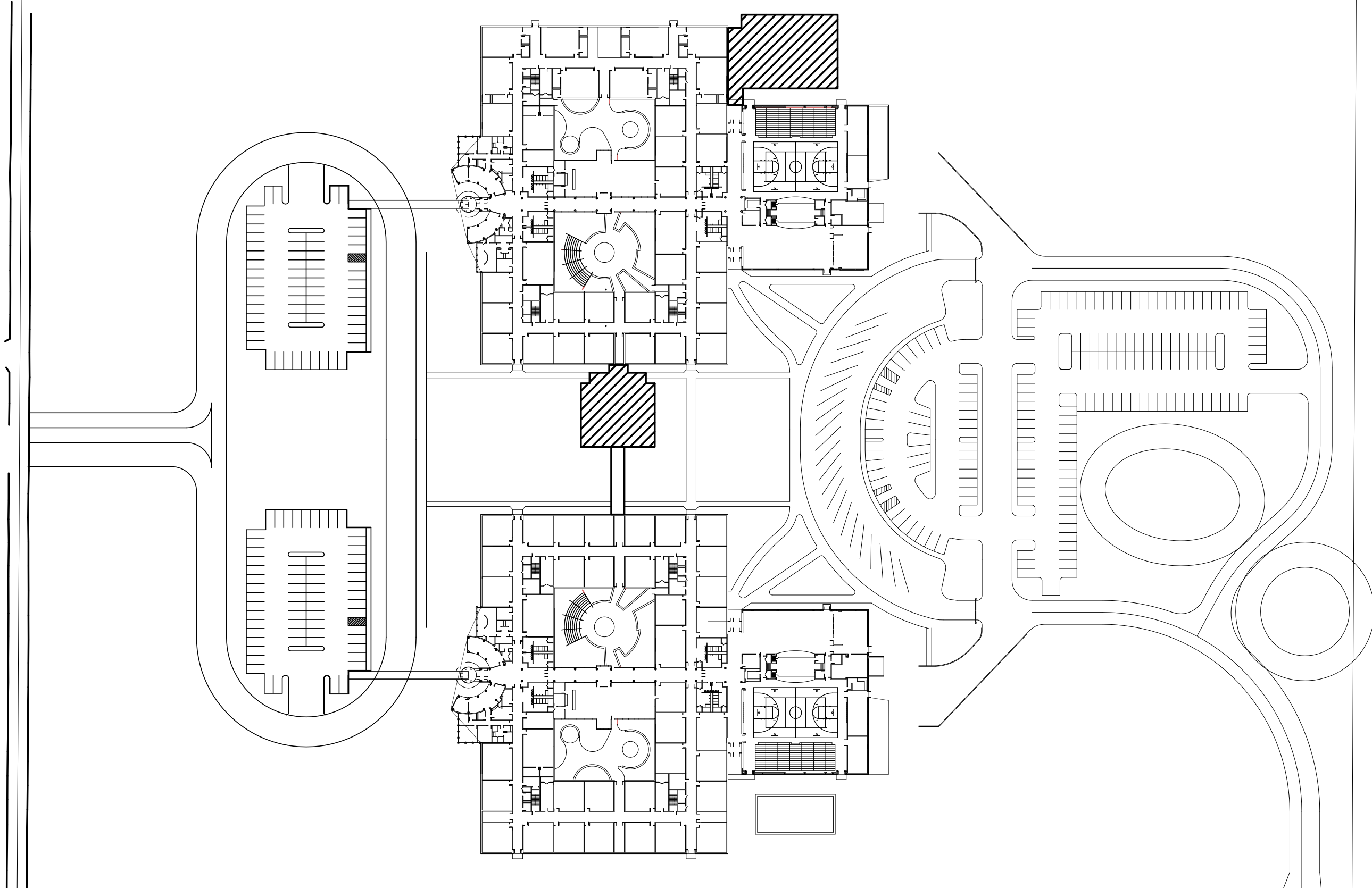
EDGEWOOD PRIMARY SCHOOL &  
 EDGEWOOD INTERMEDIATE SCHOOL

SITE PLAN - OPT. 1  
 SCALE: N.T.S.

Project No.:  
 2015031.00

Date:  
 APRIL 2016

Drawing No.:



NORTH 

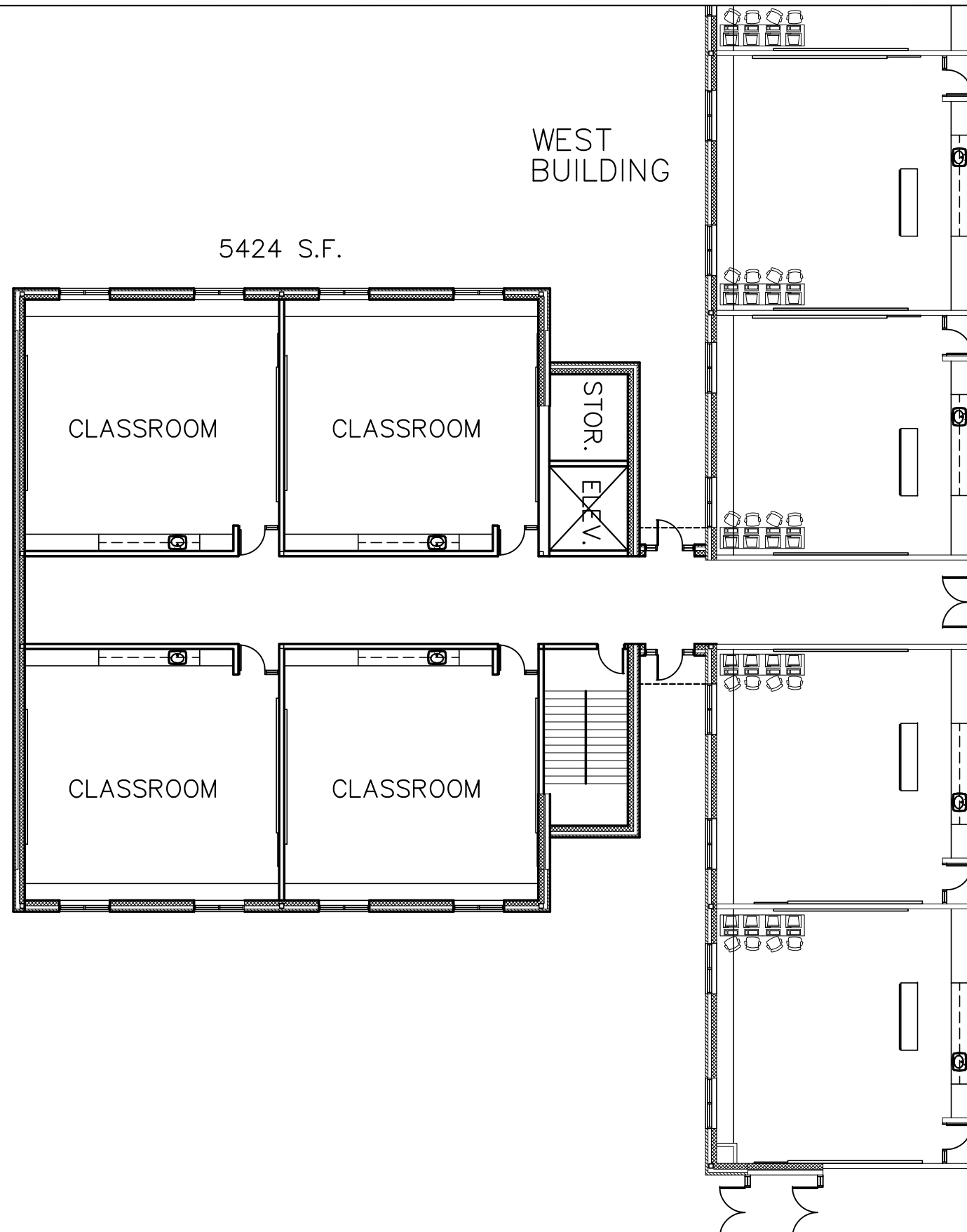
**VPS** ARCHITECTURE

528 Main Street - Suite 400 Evansville Indiana 47708  
 P (812) 423-7729 F (812) 425-4561  
[www.VPSARCH.com](http://www.VPSARCH.com)

EDGEWOOD PRIMARY SCHOOL &  
 EDGEWOOD INTERMEDIATE SCHOOL

SITE PLAN - OPT. 2  
 SCALE: N.T.S.

Project No.:	2015031.00
Date:	APRIL 2016
Drawing No.:	



NORTH 

**VPS** ARCHITECTURE

528 Main Street - Suite 400 Evansville Indiana 47708  
 P (812) 423-7729 F (812) 425-4561

www.VPSARCH.com

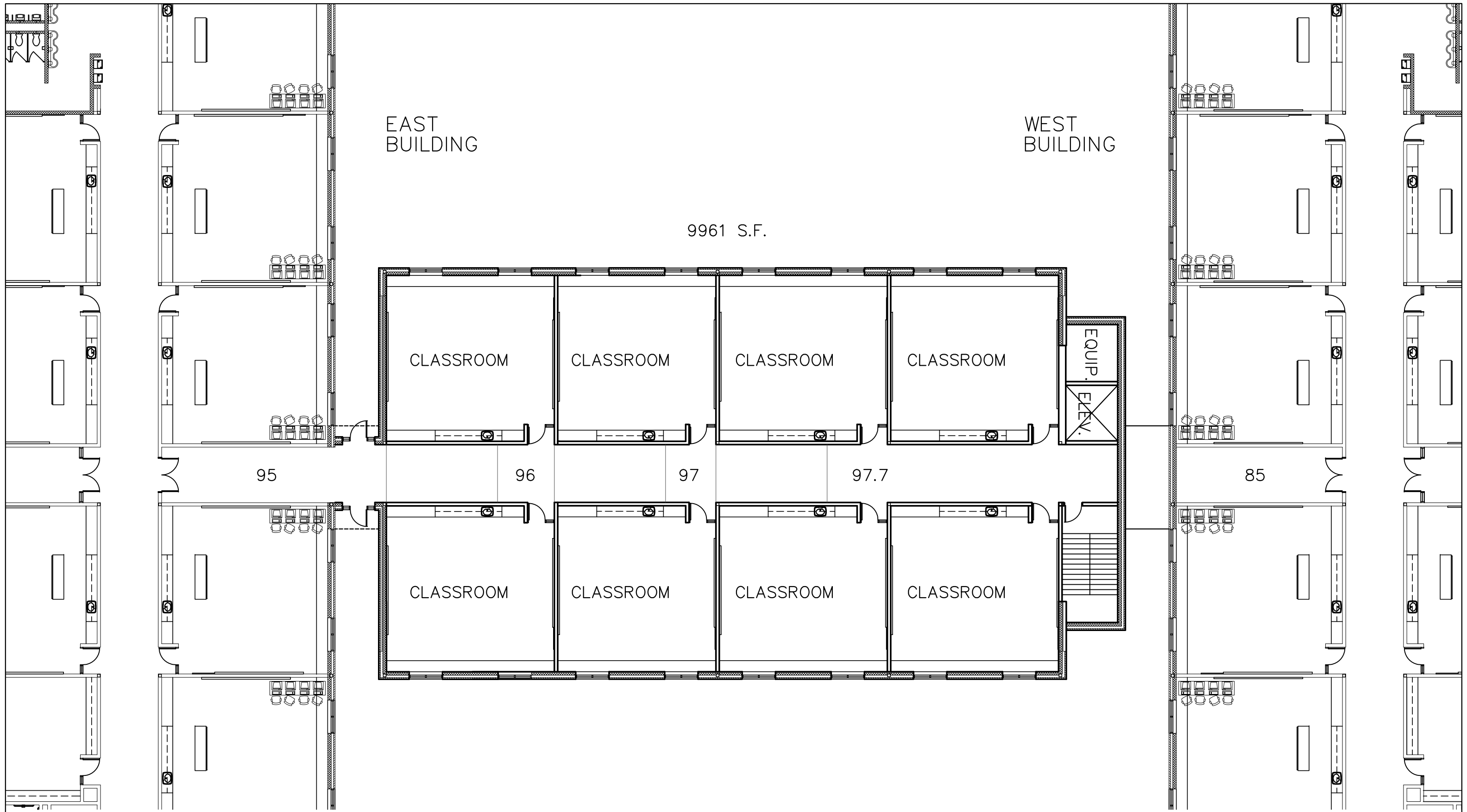
EDGEWOOD PRIMARY SCHOOL &  
 EDGEWOOD INTERMEDIATE SCHOOL

LEVEL 1  
 SCALE: 1/16" = 1'

Project No.:  
 2015031.00

Date:  
 APRIL 2016

Drawing No.:



EAST BUILDING

WEST BUILDING

9961 S.F.

CLASSROOM

CLASSROOM

CLASSROOM

CLASSROOM

EQUIP.  
ELEV.

95

96

97

97.7

85

CLASSROOM

CLASSROOM

CLASSROOM

CLASSROOM



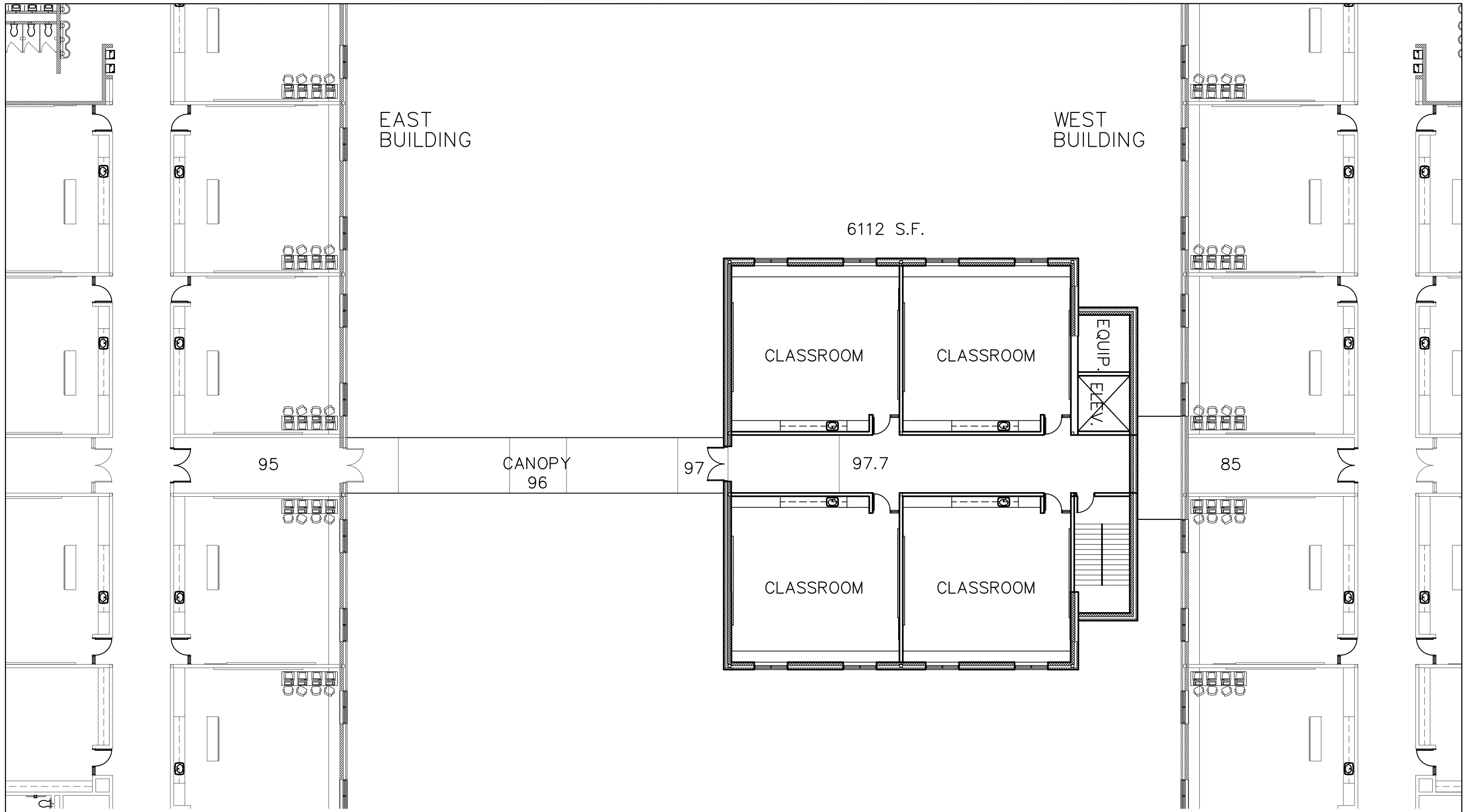
**VPS** ARCHITECTURE

528 Main Street - Suite 400 Evansville Indiana 47708  
 P (812) 423-7729 F (812) 425-4561  
 www.VPSARCH.com

EDGEWOOD PRIMARY SCHOOL &  
 EDGEWOOD INTERMEDIATE SCHOOL

LEVEL 2 - OPT. 1  
 SCALE: 1/16" = 1'

Project No.:	2015031.00
Date:	APRIL 2016
Drawing No.:	



EAST  
BUILDING

WEST  
BUILDING

6112 S.F.

CLASSROOM

CLASSROOM

EQUIP.  
ELEV.

95

CANOPY  
96

97

97.7

85

CLASSROOM

CLASSROOM



**VPS** ARCHITECTURE

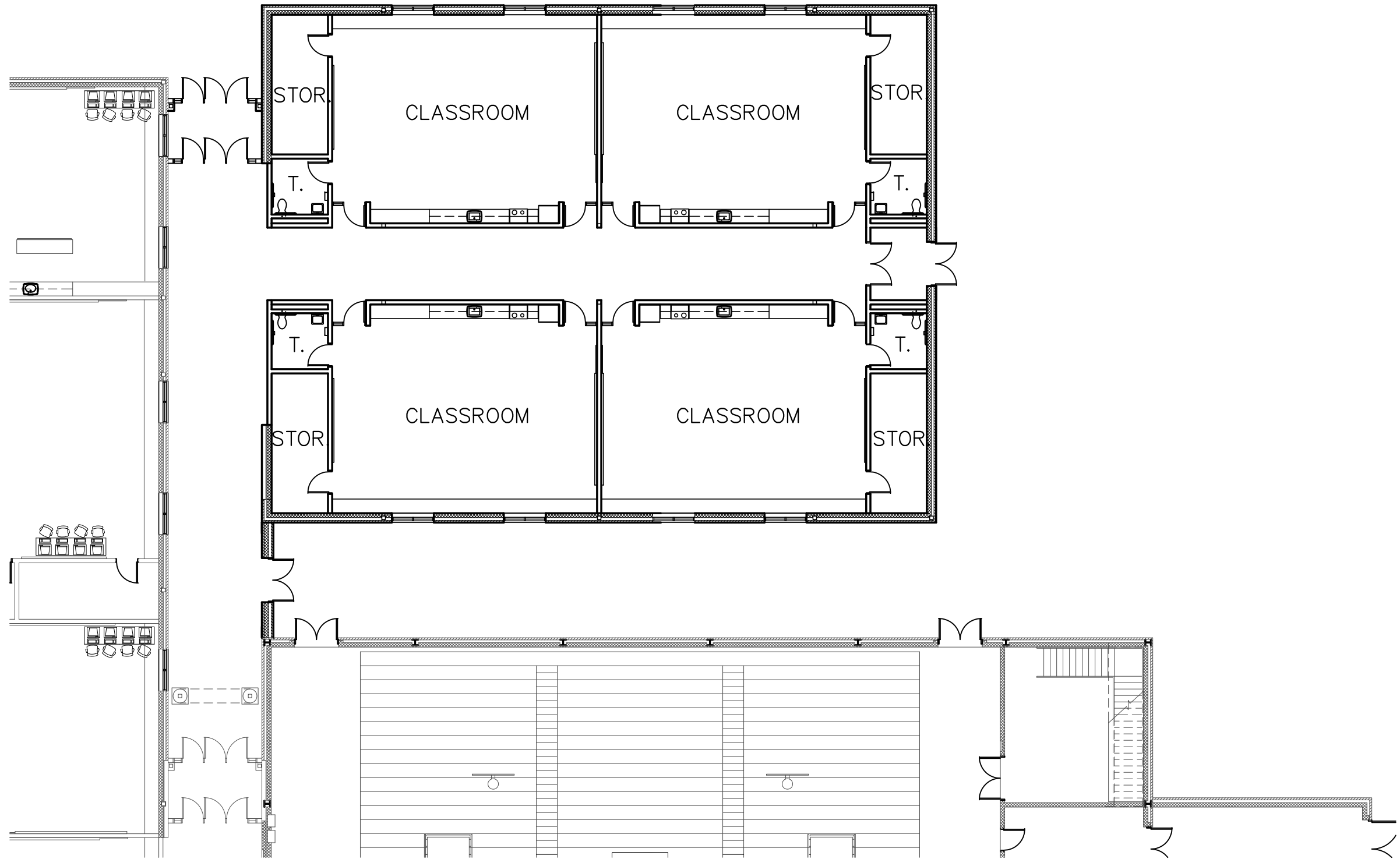
528 Main Street - Suite 400 Evansville Indiana 47708  
P (812) 423-7729 F (812) 425-4561  
www.VPSARCH.com

EDGEWOOD PRIMARY SCHOOL &  
EDGEWOOD INTERMEDIATE SCHOOL

LEVEL 2 - OPT. 2  
SCALE: 1/16" = 1'

Project No.:  
2015031.00  
Date:  
APRIL 2016  
Drawing No.:

8198 S.F.



**VPS** ARCHITECTURE

528 Main Street - Suite 400 Evansville Indiana 47708  
P (812) 423-7729 F (812) 425-4561

www.VPSARCH.com

EDGEWOOD PRIMARY SCHOOL &  
EDGEWOOD INTERMEDIATE SCHOOL

WEST BLDG. CLASSROOMS  
SCALE: 1/16" = 1'

Project No.:  
2015031.00

Date:  
APRIL 2016

Drawing No.: